

HYGGE LUXEMBOURG CBD

The HYGGE building is located in one of the most important streets of the Central Business District of the City of Luxembourg.



UNITS

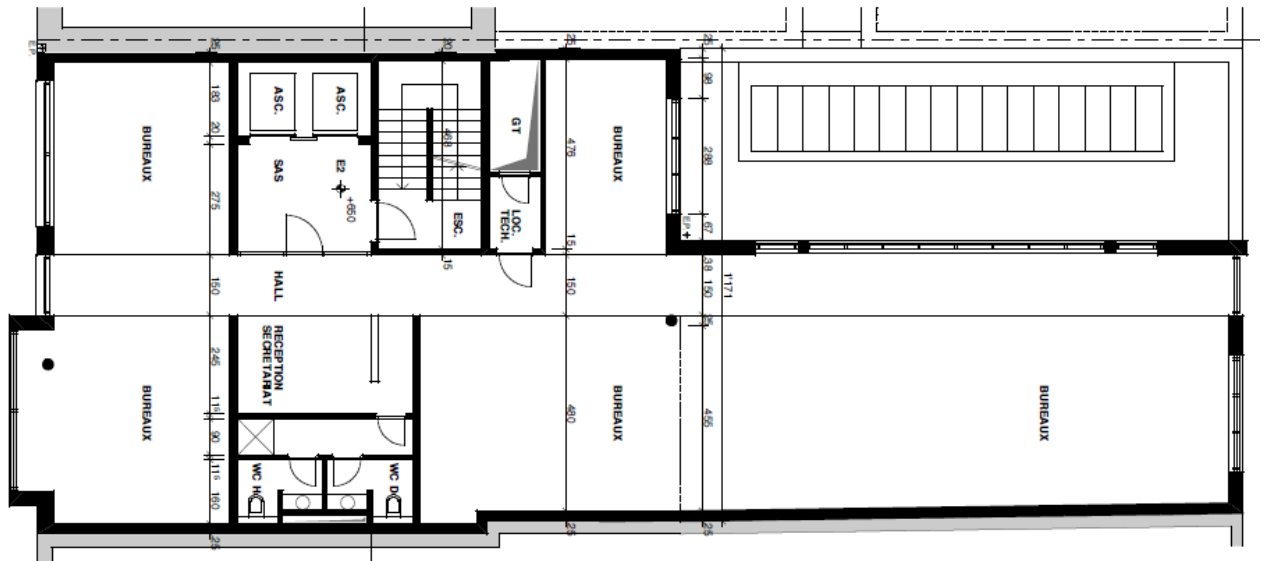
Offices	1634 sqm
Archives	123 sqm
Parking	15 u

LOCATION

Avenue Monterey 35, LU-2163 Luxembourg



FLOORPLAN



UNIT/BUILDING	FLOOR	TYPE	SURFACES	AVAILABLE
HYGGE	+ 1	Office	291 SQM	Immediate
HYGGE	+ 2	Office	291 SQM	Immediate
HYGGE	+ 3	Office	291 SQM	Immediate



CONTACT INFORMATION

Mr. William Moulin

Tel: + 352 26 95 47 22

Email : william.moulin@nextensa.eu

This offer is subject to changes without prior notice. Prices listed are target prices.

Please contact our offices for further information. Published on January 2022