

## HIGH 5! ROUTE D'ARLON

The building comprises 8,642 m<sup>2</sup> of offices, spread across 5 floors and 104 parking spaces, and benefits from an excellent location in the capital of the Grand Duchy along the route d'Arlon, one of the main access roads to Luxembourg City.

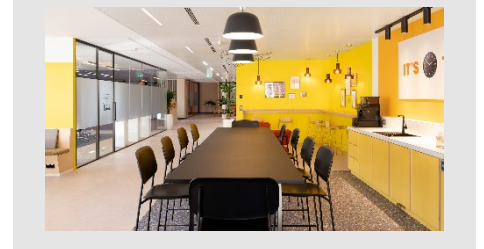
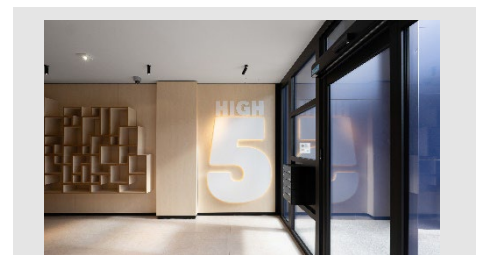


### UNITS

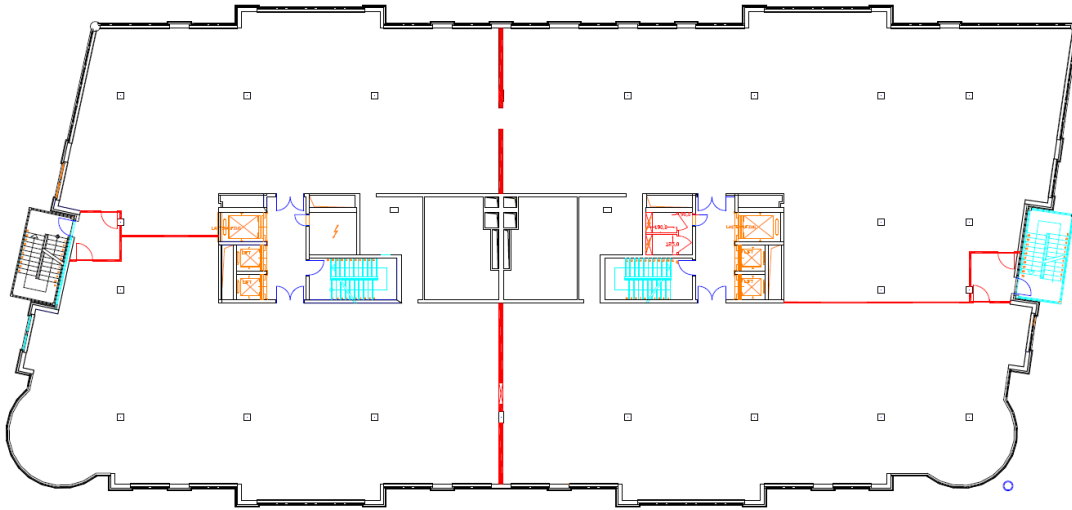
Offices	8.642 sqm
Archives	1.251 sqm
Parking	112 u

## LOCATION

Route d'Arlon 110-112, LU-1150 Luxembourg



## FLOORPLAN



UNIT/BUILDING	FLOOR	TYPE	SURFACES	AVAILABLE
HIGH5	+2	Office	1.460 SQM	Immediate



## CONTACT INFORMATION

Mr. William Moulin

Tel: + 352 26 95 47 22

Email : [william.moulin@nextensa.eu](mailto:william.moulin@nextensa.eu)

This offer is subject to changes without prior notice. Prices listed are target prices.

Please contact our offices for further information. Published on January 2022