



## RETAIL UNITS

**Status**  
**Surface - Ground Floor**  
**Address**  
**Indicative sales price**

**Building delivery**  
**Destination**

This offer is subject to changes without prior notice. Prices listed are target prices.

Please contact our offices for further information. Published on February 2024

### CONTACT INFORMATION

Mevr. Hélène Van Elst  
M : +32 (0)486 24 44 94  
Email : helene.van.elst@tour-taxis.com

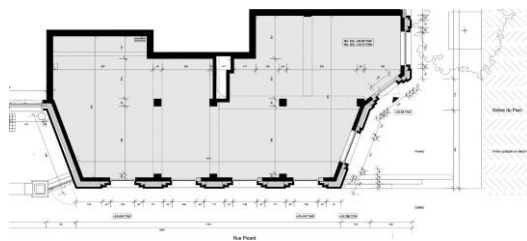


**SOLD**

## FRANKLIN

CASCO  
152,13 m<sup>2</sup> G / 124,16 m<sup>2</sup> N  
Drève du Parc 2 - 1000 Bruxelles (Picard)

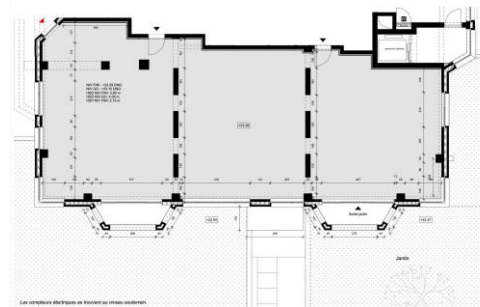
Delivered  
Commercial / Equipment



## DAYTON I

CASCO  
255 m<sup>2</sup> G / 224,3 m<sup>2</sup> N  
Drève du Parc 13 - 1000 Bruxelles  
2.666€/m<sup>2</sup> - 679.830 € exVAT

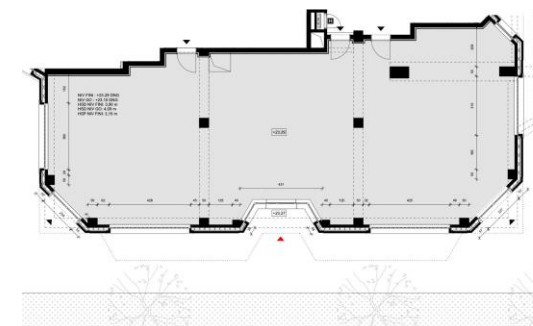
Immediate  
(Permit) destination : Children's daycare



## DAYTON II

CASCO  
240 m<sup>2</sup> G / 210,2 m<sup>2</sup> N  
Drève du Parc 17 - 1000 Bruxelles  
3.083€/m<sup>2</sup> - 739.920€ exVAT

Immediate  
Horeca or food-grocery like commerce





## RETAIL UNITS

**Status**  
**Surface - Ground Floor**  
**Address**  
**Indicative sales price**

**Building delivery**  
**Destination**

This offer is subject to changes without prior notice. Prices listed are target prices.

Please contact our offices for further information. Published on September 23

### CONTACT INFORMATION

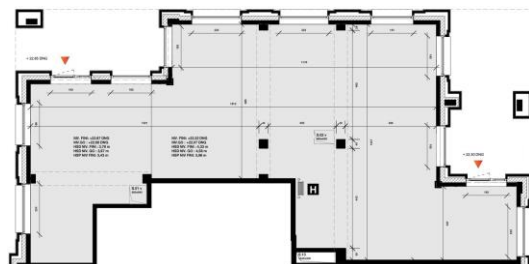
Mevr. Hélène Van Elst  
M : +32 (0)486 24 44 94  
Email : helene.van.elst@tour-taxis.com



## CENTRAL

CASCO  
187,52 m<sup>2</sup> G / 153 m<sup>2</sup> N  
Drève du Parc 27-29 - 1000 Bruxelles

Delivered  
Equipment - medical care



## BROOKLYN

CASCO  
319,9 m<sup>2</sup> G / 275,5 m<sup>2</sup> N  
Drève du Parc 35 - 1000 Bruxelles  
2.833€/m<sup>2</sup> - 906.276,70€ exVAT

Immediate  
Equipment - medical care



## ADMIRAL

CASCO  
294,1 m<sup>2</sup> G / 258,3 m<sup>2</sup> N  
Drève du Parc 47-49 - 1000 Bruxelles  
3.333€/m<sup>2</sup> - 980.235,30€ exVAT

Immediate  
Commerce - Horeca

